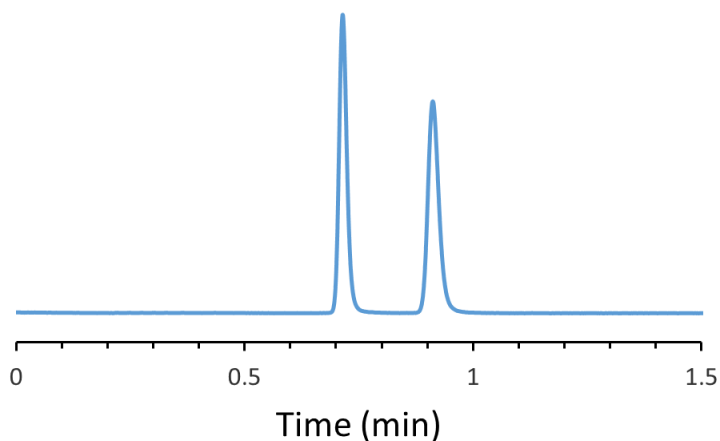


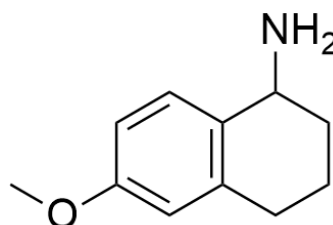
CHIRAL APPLICATION NOTE

Sample name: 6-methoxy-1,2,3,4-tetrahydro-1-naphthalenylamine

Chromatogram:



Structure:



Run Conditions:

Column: VancoShell (10cmx4.6mm, 2.7 μ m)
Mobile phase: 100/0.1 wt %: Methanol/Ammonium Trifluoroacetate
Flow Rate: 2.3 mL/min
Temperature: Ambient (23 °C)
Injection Volume: 1.0 μ L
Detection: UV 220 nm
Retention (min): 0.72/0.91 (Peak1/Peak 2)

Resolution: 5.26