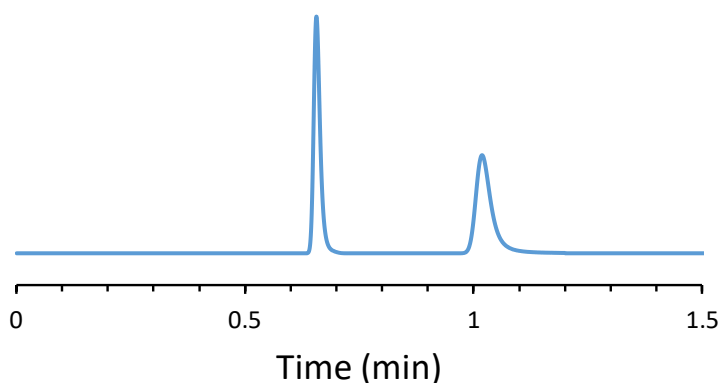


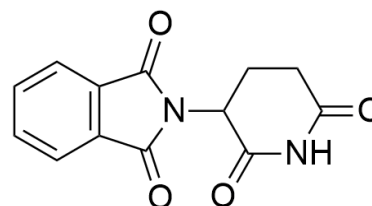
## CHIRAL APPLICATION NOTE

**Sample name:** Thalidomide

**Chromatogram:**



**Structure:**



### Run Conditions:

Column: VancoShell (10cmx4.6mm, 2.7 $\mu$ m)  
Mobile phase: 100: Methanol  
Flow Rate: 2.0 mL/min  
Temperature: 45  $^{\circ}$ C  
Injection Volume: 1.0  $\mu$ L  
Detection: UV 220 nm  
Retention (min): 0.66/1.02 (Peak1/Peak 2)

**Resolution:** 8.50