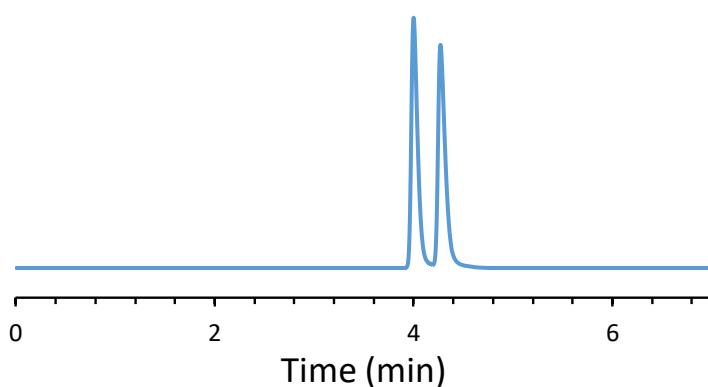


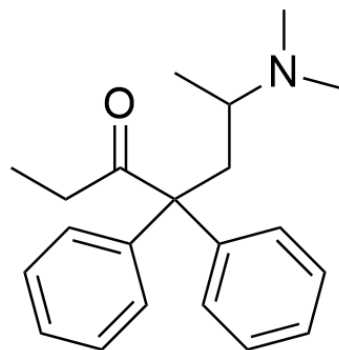
## CHIRAL APPLICATION NOTE

**Sample name:** Methadone

**Chromatogram:**



**Structure:**



### Run Conditions:

Column: CShell-RSP (15cmx4.6mm, 2.7 $\mu$ m)  
Mobile phase: 20/80: Acetonitrile/50 mM Ammonium Formate (pH 3.6)  
Flow Rate: 0.7 mL/min  
Temperature: 45 °C  
Injection Volume: 1.0  $\mu$ L  
Detection: UV 230 nm  
Retention (min): 4.00/4.27 (Peak1/Peak 2)

**Resolution:** 2.21